



PROMI500

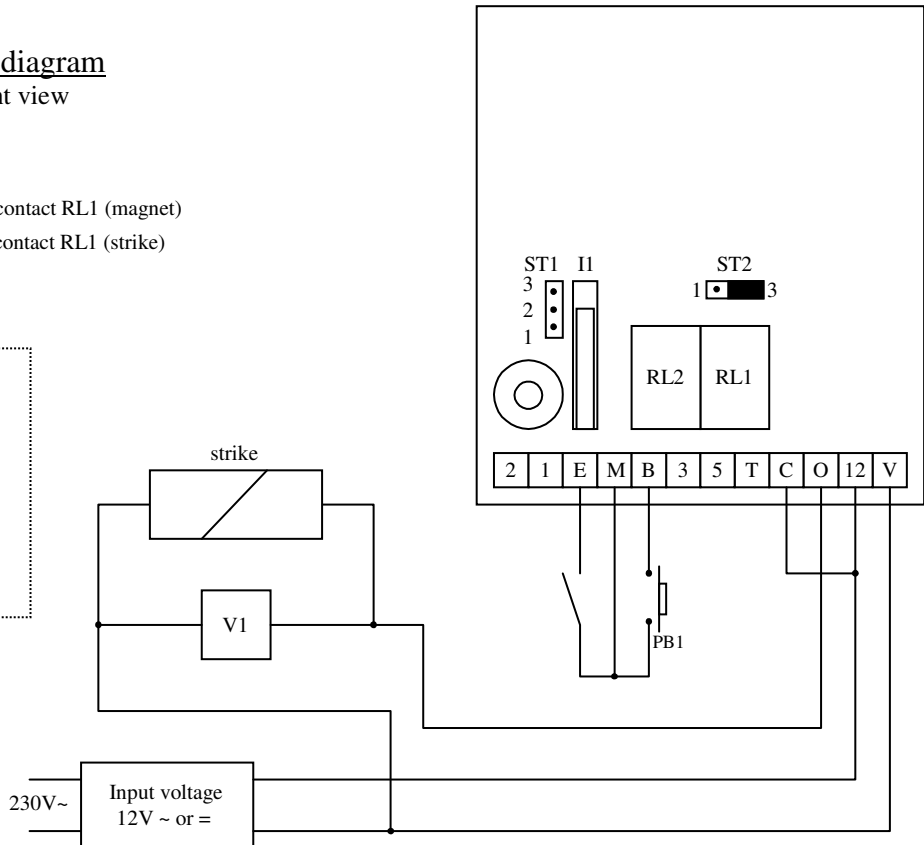
PIN Code and/or Badge STAND-ALONE PROXIMITY SYSTEM

Wiring diagram PCB front view

ST2

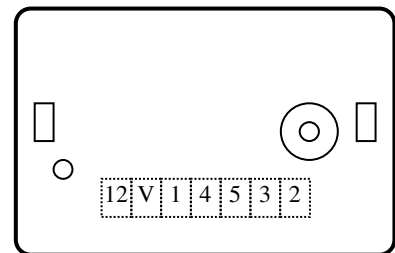
- 1 ■ • 3 N/C contact RL1 (magnet)
- 1 • ■ 3 N/O contact RL1 (strike)

Warning
Do not use a switching power supply because of the interference radiation that may disturb the reading of the badges



B	Request-to-exit PB1	12	Power supply
E	Alarm Input	V	Power supply
M	Common PB1, E and 4	1	Data
O	Relay 1 contact	2	Buzzer
C	Common	3	Green LED
T	Relay 2 N/O contact	4	Common M
II	Anti-tamper switch	5	Red LED
V1	Varistor		
ST1	Jumper for reset		
ST2	Jumper for relay 1		
RL1	Door relay		
RL2	Alarm relay		

Auxiliary reader
(terminal connections)



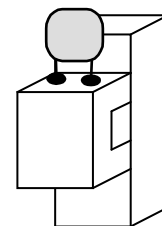
See wiring diagram auxiliary reader

This device comes with a varistor.

The varistor must be connected on the strike terminal (electromagnet...) operated by the device.

If this product operates more than one strikes, each of them should have a varistor.

The varistor controls the overload produced by the strike coil – back emf.



If you are using a « Shear Lock » electromagnetic lock, it is recommended to use a separate power supply than the one connected to the PROMI500.

Technical features

Input voltage	12 VAC/DC
Output	2 relays, N/O & N/C contact 3A /125V
Anti-triggering contact	500 mA 50 V ~ or =
Badge entry	500 programmable badges
Code entry	500 programmable codes, 5-digit PIN code
Master code	5-digit programmable code
Input	1 request-to-exit
Keyboard	12-digit keypad with built-in buzzer (audible signal)
Distance between the second reader and the PROMI500 unit	minimum 24 inches (60 cm) maximum 45 yards (50 meters) (cable minimum 7 x 0.6 mm ²)

Warning: Do not use a switching power supply because of radiation interference, which may disturb the reading of the badges.

Default values

Master code:	12345
Relay time delay:	1 second
Key-in keypad:	10 seconds
Alarm:	Off

Audible signals

1 beep (long)	Validation of data in programming mode: master code, proximity badge or time delay. Or access code validated
2 beeps (short)	Accessing the programming mode or exiting from the programming mode
4 beeps (short)	incorrect mode, user number time delays entered

Visual signals

LED color	Normal mode	Programming mode
Green	Door relay activated	Code/Badge position empty
Red	Alarm relay activated	Code/Badge position busy
Orange		Programming mode
Orange flashing	Stand-by	Data computing error

Request-to-exit

The request-to-exit push button PB1 operates relay RL1.
The LED turns green when the relay is activated.

Setting a new master code

Enter the master code twice (for the first use, the master code default is 12345). 2 beeps will sound and the orange LED illuminates to confirm that you are in programming mode.

Enter *3, then 5-digits for the new master code. The LED goes out for 1 second and an audible beep indicates that the new master code is accepted.

Press # to exit from the programming mode. 2 beeps confirm that the reader is in standby mode.

4 beeps indicate a data computing error.

Setting the Mode and Time Relays

Enter the master code twice (for the first use, the master code default is 12345). 2 audible beeps, and the orange LED illuminates to confirm entry into programming mode.

Operating mode	Enter *0 then the 2-digit mode number: Mode 00: PIN code and proximity badge, up to 500 users (500 PIN + 500 badges) Mode 01: Proximity badges only up to 500 users. Mode 02: PIN codes or proximity badges, up to 500 users. The LED goes out for 1 second and an audible beep indicates the time delay has been accepted.
Door relay	Enter *1, then the time delay in seconds: 01 equal 1 second up to 99 for 99 seconds. 00 sets a latched output (toggle on/toggle off) The LED goes out for 1 second and an audible beep indicates the time delay has been accepted.
Alarm Relay	Enter *2, then the time delay in seconds: 01 equal 10 seconds up to 99 for 990 seconds. 00 for alarm off The LED goes out for 1 second and an audible beep indicates the time delay has been accepted.

Press # to exit from the programming mode. 2 beeps confirm that the reader is in standby mode.

4 beeps indicate a data computing error.

Setting new user codes and proximity badges

Enter the master code twice (for the first use, the master code default is 12345). 2 audible beeps, and the orange LED illuminates to confirm entry into programming mode.

Press *0 and enter operating mode (see above table).

Enter the user number (000 to 499). If the LED goes green, the user number is available, therefore present a badge in front of the main reader. The audible beep will sound and the green LED will change to orange - then enter a 5-digit Pin code, a long beep will sound to confirm that the badge and code has been accepted (enter a 5-digit PIN code even if not using PIN – this will set the user slot, but the PIN will not be required during operation – depends upon initial mode setting). If the LED is red the user number is unavailable, therefore press the * key twice to cancel the old badge/code. Enter another user number or press # to exit from the programming mode. 2 beeps confirm that you have returned to standby mode.

Canceling or replacing programmed user codes and badges

Enter the master code twice (for the first use the master code default value is 12345). 2 beeps and the orange LED light on to confirm that you have entered into the programming mode.

Enter the user number (000 to 499). The LED goes off for 1 second, and an audible beep is emitted. The red LED goes on indicating that the user number is unavailable.

Press the * key twice (**). The LED goes off for 1 second, and an audible beep is emitted.

The green LED goes on, indicating that the user badge/code is cancelled, the user number is now empty.

Press # to exit from the programming mode.

OR

Present the new badge in front of the main reader. Once the audible beep will sound and the green LED will change to orange then enter a 5-digit Pin code a long beep will sound to confirm that the badge/code has been memorized.

To exit from the programming mode, press #. 2 beeps confirm that you have returned to the reading mode.

Reset the master code and the badges

Put the jumper ST1 to position 2-3.

The green LED blinks for 5 seconds. An audible beep confirms that the master code has been reset to the default value 12345. The red LED blinks.

Take off the jumper from position 2-3 to go back to normal mode

OR

Keep the jumper on position 2-3 to reset all the proximity badges.

The red LED blinks for 5 seconds then stays on during the reset.

When the reset is completed the red LED goes off.

Take off the jumper from position 2-3 to go back to a normal mode.

Operating instructions

Mode 00: Present the badge in front of the PROMI500 one audible beep will sound to confirm that the badge is valid, **then** enter the PIN code.

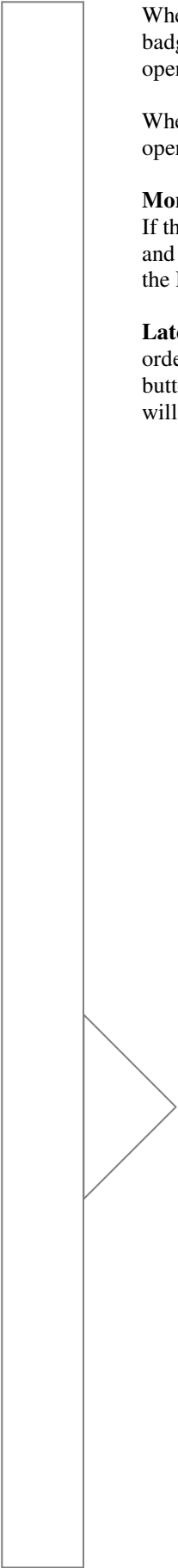
Mode 01: Present the badge in front of the PROMI500 reader or of the second reader.

Mode 02: Present the badge in front of the PROMI500 reader, the second reader **or** enter the PIN code.

After 3 incorrect badge and/or PIN codes are entered, the PROMI500 reader and the second proximity reader are locked out for 30 seconds and the alarm relay is activated. 2 audible beeps sound when the badge/PIN code is not valid.

Alarm function

The tamper switch activates the relay of the alarm when the front panel is removed. If the alarm time delay is different to 00, the door monitoring (door ajar or door forced open) is enabled:



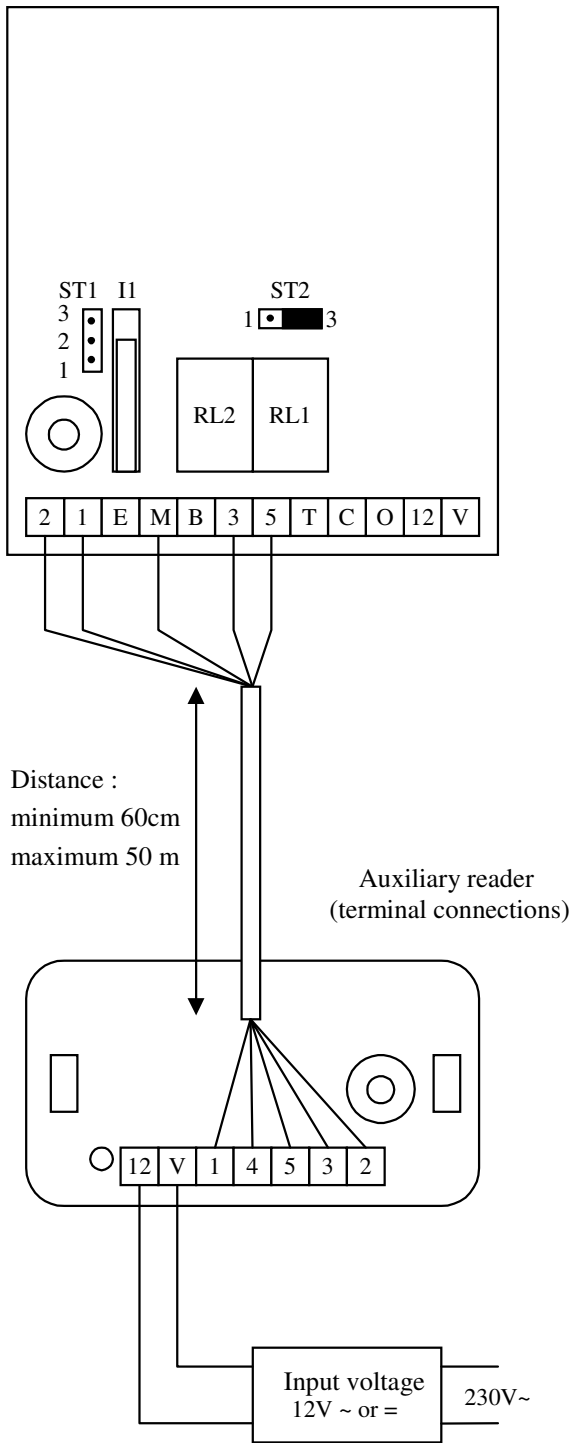
When the door is opened, without being activated by the request-to-exit button or a badge, the alarm relay is activated after 1 second and the red LED lights on (forced open door).

When the badge or the request-to-exit button are used to open a door, if the door stays open, the open contact will trigger the alarm relay according to the door relay output.

Momentary output – the alarm time delay begins at the end of the door time delay. If the door is maintained open after the alarm time delay, the alarm relay is activated and the red LED lights on. Closing back the door will deactivate the alarm relay and the LED lights off.

Latched output – the alarm time delay begins only when the door stays open after ordering the closing by presenting back the badge or pressing on the request-to-exit button, the alarm relay is activated and the red LED lights on. Closing back the door will deactivate the alarm relay and the LED lights off.

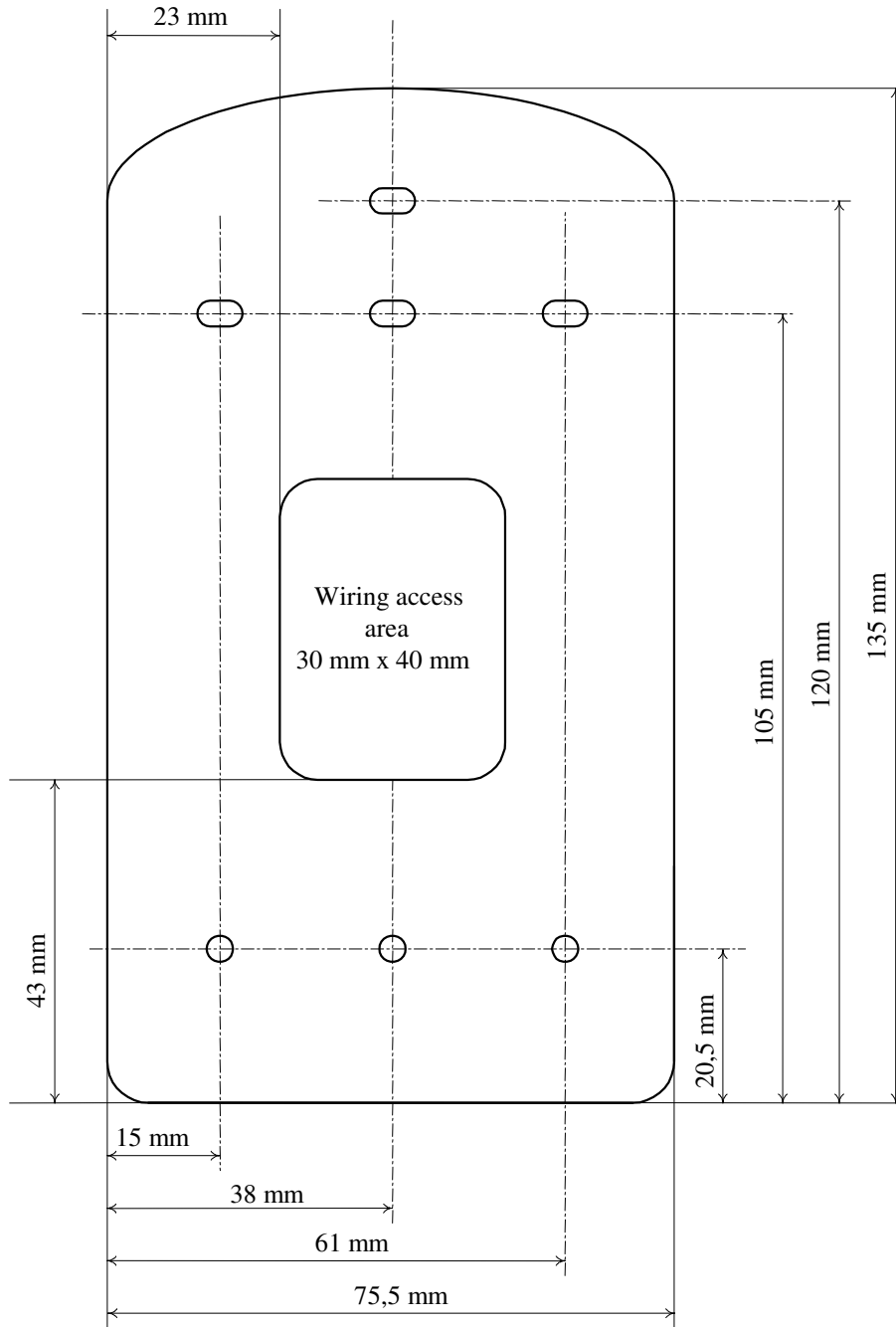
Wiring diagram auxiliary reader



PROMI500	Reader
12	Power supply
V	Power supply
1	Data
2	Buzzer
3	Green LED
M	Common
5	Red LED

It is recommended to use a separate power supply for the auxiliary reader.

Template



- PROMI500

Template

- DGLP or DGLI Auxiliary reader

