

POWERMAG25

Self Aligning Shearlock

Range: DIAX

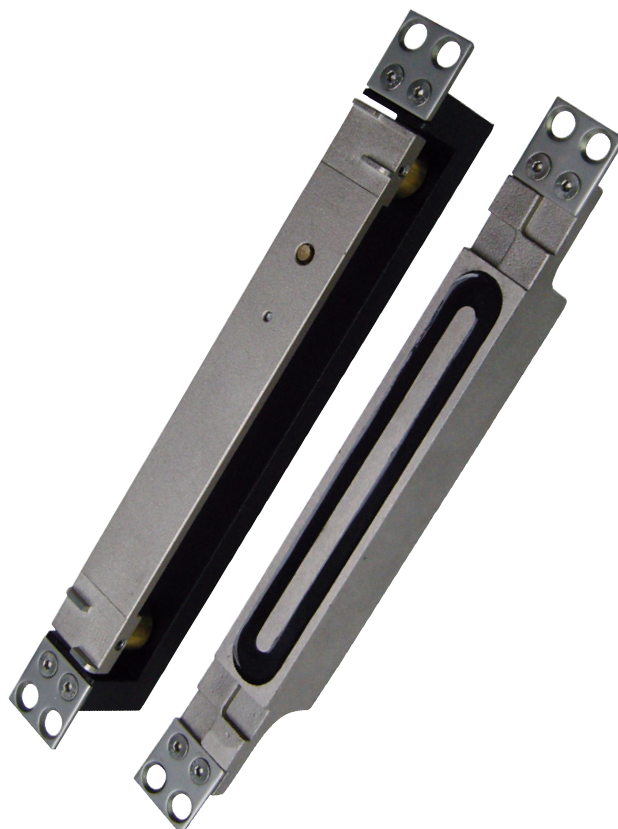


Self Aligning Shearlock

The Powermag25 is a narrow profile shearlock for single or double action (swing- through) doors. Operated by 12 or 24vdc, the powermag provides upto 800kg holding force by means of the unique steel retaining blocks.

Unlike some shearlocks, the powermag operates in the same way as a traditional magnetic lock, meaning there is no in-rush current. The armature plate is attracted to the magnet body as soon as the two begin to line up, but final locking cannot be made until the two are completely in line, then the armature will 'snap' into position and lock.

A low current 12 or 24vdc direct current supply is all that is required for continuous operation. The Powermag 25 by definition is a Fail Safe (power locked) device.



Technical specification

- **Input Voltage 12VDC or 24VDC**
- **Consumption:**
480mA at 12VDC
240mA at 24VDC
- **-20 to +50C operating temperature**
- **Dimensions:**
Magnet, 243 x 22 x 25 (h x d x w)
Armature, 243 x 32 x 25 (h x d x w)

Product features

- **Patented, self-aligning technology**
- **Vertical and horizontal mounting**
- **Surface housing available (PMAG-H)**
- **12 - 24 VDC**
- **Can be connected to diferent types of access control systems**
- **Fail safe**
- **Slim profile**
- **Compact size**